

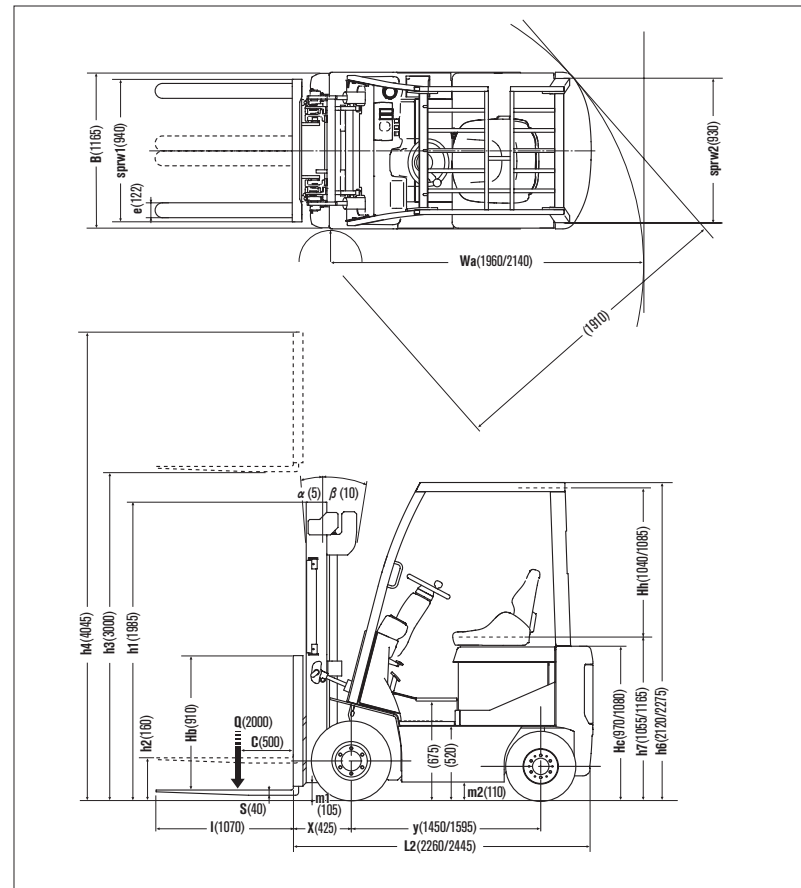
NISSAN
FORKLIFT

BX Series
Pneumatic Tire/Electric Powered Models

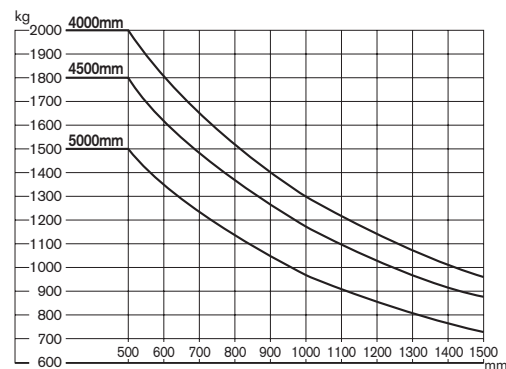
2.0 ton ▶ 2.5 ton
at 500mm Load Center



Dimensions



Load Capacity Chart



No capacity reduction until 4000 mm height. Load capacities are computed with following conditions, a) Standard 2W Mast and b) Mast in vertical position.

Tire and Tread Specifications

Front Tire	single	double
Front Tire Size	23×9-10-16PR	6.50-10-10PR
Overall Width mm	1165	1525
Front Tread mm	940	1130

Ground Clearance

Under mast mm	105	105
Under frame mm	110	110

Mast Specifications & Rated Capacities

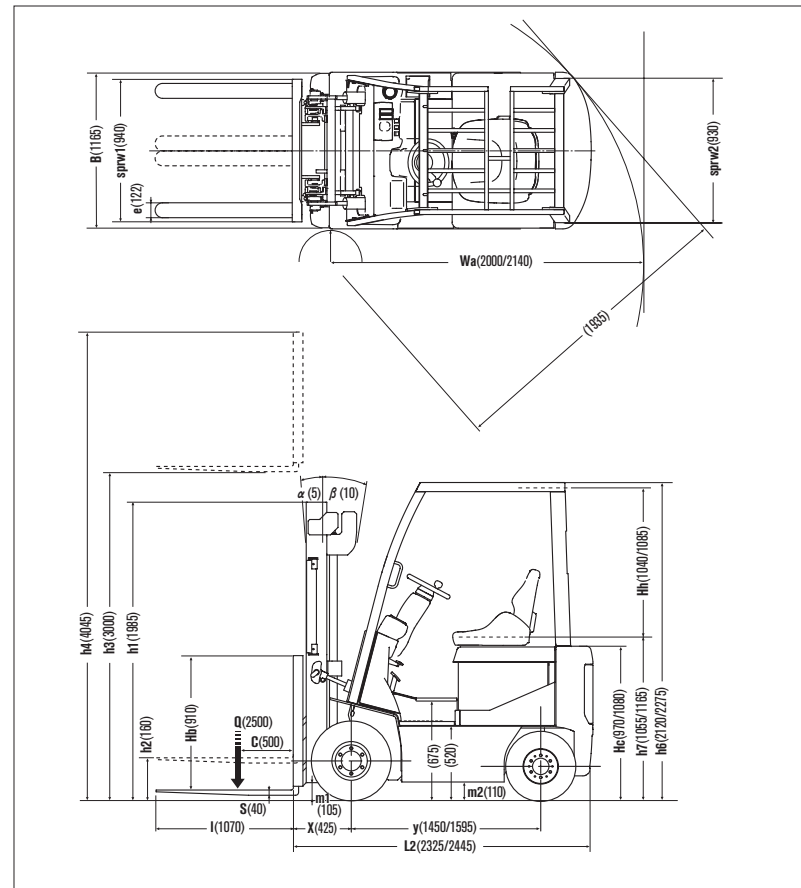
P1B2L20U, P1B2R20U, PG1B2L20U

Mast type	Mast name	Max. fork Height mm	Overall height			Free lift		Front overhang mm	Tilt angle deg	Capacity Single tire Load center 500mm Kg
			Fully lowered mm	Without backrest mm	With STD backrest mm	Without backrest mm	With STD backrest mm			
Two stage (Wide view 2W)	2W270	2700	1835	3320	3745	160	160	425	5/10	2000
	2W300	3000	1985	3620	4045					2000
	2W330	3300	2135	3920	4345					2000
	2W350	3500	2270	4120	4545					2000
	2W370	3700	2395	4320	4745					2000
	2W400	4000	2585	4620	5045					2000
	2W450	4500	2835	5120	5545					1800
	2W500	5000	3085	5620	6045					1500
Two stage (Full free 2F)	2F270	2700	1835	3320	3745	1230	830	425	5/10	2000
	2F300	3000	1985	3620	4045	1380	980			2000
	2F330	3300	2135	3920	4345	1530	1130			2000
	2F350	3500	2270	4120	4545	1665	1265			2000
	2F370	3700	2395	4320	4745	1790	1390			2000
	2F400	4000	2585	4620	5045	1980	1580			2000
Three stage (Full free 3F)	3F385	3850	1835	4505	4895	1230	830	415	5/5	2000
	3F430	4300	1985	4955	5345	1380	980			1900
	3F475	4750	2135	5405	5795	1530	1130			1750
	3F515	5150	2270	5810	6200	1665	1265			1500
	3F550	5500	2395	6155	6545	1790	1390			1100
	3F600	6000	2585	6655	7045	1980	1580			700

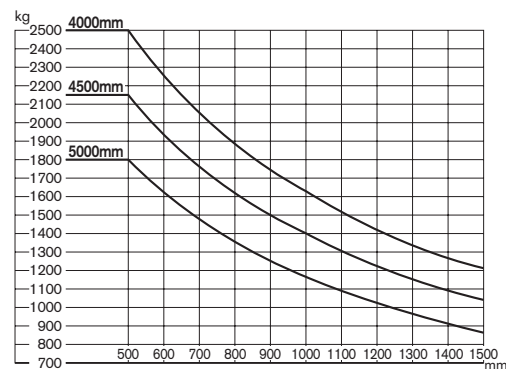
Main Truck Specifications

Item		P1B2L20U	P1B2R20U	PG1B2L20U					
SPECIFICATIONS	1 Manufacturer	NISSAN			1				
	2 Model	P1B2L20U	P1B2R20U	PG1B2L20U	2				
	3 Load capacity	Q Load lifted	kg	2000	2000	2000	3		
	4 Load center	C Distance	mm	500	500	500	4		
	5 Power unit	Battery, diesel, Gasoline, LP gas			BAT	BAT	BAT	5	
	6 Operator type	Walkie, rider/stand, rider/seat			Rider / seat	Rider / seat	Rider / seat	6	
	7 Tire type	front/rear			P(SE) / P(SE)	P(SE) / P (SE)	P(SE) / P(SE)	7	
	8 Wheels(X=driven)	Number			2× / 2	2× / 2	2× / 2	8	
DIMENSIONS	9 Maximum fork height	h3 Standard lift height	mm	3000	3000	3000	9		
	10 Free lift	h2 Standard free lift	mm	160	160	160	10		
	13 Fork size	s.e.l	mm	40×122×1070	40×122×1070	40×122×1070	13		
		Max. Fork Spread	mm	1000	1000	1000			
		Min. Fork Spread	mm	250	250	250			
	14 Tilt range	α / β Mast forward/backward			deg	5 / 10	5 / 10	5 / 10	14
	15	L2 Length to fork face	mm	2260	2260	2445	15		
	16	B Overall width	mm	1165	1165	1165	16		
	Overall measurement	17	h1 Height mast retracted	mm	1985	1985	1985	17	
		18	h4 Height mast extended	mm	4045	4045	4045	18	
		19	h6 Height overhead guard	mm	2120	2120	2275	19	
		20	h7 Height of driver's seat	mm	1055	1055	1165	20	
	21	Turning radius (outside)	Wa	mm	1960	1960	2140	21	
22	Load distance	X From center of front axle	mm	425	425	425	22		
23	Right angle stacking aisle	Ast pallets (L×W) 1200×800/1000×1200			mm	3785 / 3585	3785 / 3585	3965 / 3765	23
PERFORMANCE	24	Travelling	full load	km/h	16	15.5	15	24	
			no load	km/h	17.5	17.5	17		
	25	Lifting	full load	mm/s	385	385	385	25	
			no load	mm/s	605	605	605		
	26	Lowering	full load	mm/s	500	500	500	26	
			no load	mm/s	500	500	500		
28	Max. drawbar pull	full/no load	N	14595 / 14595	14595 / 14595	14595 / 14595	28		
29	Gradeability at 2km/h	full/no load	%	24 / 40	22 / 35	21 / 33	29		
30	Max. gradeability	full/no load	%	—	—	—	30		
WEIGHTS	32	Truck weight	no load	kg	3445	3825	4065	32	
	33	Weight distribution	full load	front/rear	kg	4855 / 590	4940 / 885	4955 / 1110	33
			no load	front/rear	kg	1560 / 1885	1645 / 2180	1775 / 2290	34
	35		Number.	front/rear	each	2 / 2	2 / 2	35	
CHASSIS & WHEELS	36	Tires	Size-front			23×9-10-16PR	23×9-10-16PR	23×9-10-16PR	36
			Size-rear			18×7-8-14	18×7-8-14	18×7-8-14	37
			Wheelbase	y	mm	1450	1450	1595	38
39	Tread	sprw 1/sprw 2	front/rear	mm	940 / 930	940 / 935	940 / 930	39	
	Backrest height	Hb top of backrest - upper of fork face	mm	910	910	910			
	Overhead guard clearance	Hh	mm	1040	1040	1085			
	Counter weight height	Hc	mm	970	970	1080			
DRIVE LINE	40	Ground clearance	m1 Full load minimum mast	mm	105	105	105	40	
			m2 Full load center of wheelbase	mm	110	110	110	41	
	42	Service brake	Mechanical/hydraulic/electric/pneu			Hyd / Elec	Hyd / Elec	Hyd / Elec	42
	43	Parking brake	Foot/hand/seat switch			Foot	Foot	Foot	43
	45	Battery	Voltage/Capacity (5 hour)	min	V/AH	48 / 450	48 / 700	48 / 865	45
			weight(STD capacity type)	min-max	kg	710-885	1095	1370	46
	47	Electric motors	drive		KW	12	12	12	47
			Load handling		KW	13.5	13.5	13.5	48
	54	Control type	drive			MOS-INV	MOS-INV	MOS-INV	54
			Load handling			MOS-INV	MOS-INV	MOS-INV	
	Power steering				—	—	—		
57	Operating pressure	for attachment			MPa	12.7	12.7	12.7	57

Dimensions



Load Capacity Chart



No capacity reduction until 4000 mm height. Load capacities are computed with following conditions, a) Standard 2W Mast and b) Mast in vertical position.

Tire and Tread Specifications

	single	double
Front Tire	23 × 9-10-16PR	6.50-10-10PR
Overall Width mm	1165	1525
Front Tread mm	940	1130

Ground Clearance

Under mast mm	105	105
Under frame mm	110	110

Mast Specifications & Rated Capacities

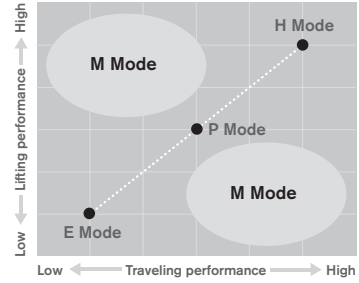
P1B2L25U/FU, P1B2R25U, PG1B2L25U

Mast type	Mast name	Max. fork Height mm	Overall height			Free lift		Front overhang mm	Tilt angle Forward/Backward deg	Capacity Single tire Load center 500mm Kg
			Fully lowered mm	Fully extended		Without backrest mm	With STD backrest mm			
				Without backrest mm	With STD backrest mm					
Two stage (Wide view 2W)	2W270	2700	1835	3320	3745	160	160	425	5/10	2500
	2W300	3000	1985	3620	4045					2500
	2W330	3300	2135	3920	4345					2500
	2W350	3500	2270	4120	4545					2500
	2W370	3700	2395	4320	4745					2500
	2W400	4000	2585	4620	5045					2500
	2W450	4500	2835	5120	5545					2150
	2W500	5000	3085	5620	6045					1800
Two stage (Full free 2F)	2F270	2700	1835	3320	3745	1230	830	425	5/10	2500
	2F300	3000	1985	3620	4045	1380	980			2500
	2F330	3300	2135	3920	4345	1530	1130			2500
	2F350	3500	2270	4120	4545	1665	1265			2500
	2F370	3700	2395	4320	4745	1790	1390			2500
	2F400	4000	2585	4620	5045	1980	1580			2500
	2F450	4500	2835	5120	5545	2150	1800			2500
Three stage (Full free 3F)	3F385	3850	1835	4505	4895	1230	830	415	5/5	2500
	3F430	4300	1985	4955	5345	1380	980			2400
	3F475	4750	2135	5405	5795	1530	1130			2150
	3F515	5150	2270	5810	6200	1665	1265			1600
	3F550	5500	2395	6155	6545	1790	1390			1250
	3F600	6000	2585	6655	7045	1980	1580			900

Main Truck Specifications

Item		P1B2L25U/FU	P1B2R25U	PG1B2L25U						
SPECIFICATIONS	1 Manufacturer	NISSAN			1					
	2 Model	P1B2L25U/FU	P1B2R25U	PG1B2L25U	2					
	3 Load capacity	Q Load lifted	kg	2500	2500	2500	3			
	4 Load center	C Distance	mm	500	500	500	4			
	5 Power unit	Battery, diesel, Gasoline, LP gas			BAT	BAT	BAT	5		
	6 Operator type	Walkie, rider/stand, rider/seat			Rider / seat	Rider / seat	Rider / seat	6		
	7 Tire type	front/rear			P(SE) / P(SE)	P(SE) / P(SE)	P(SE) / P(SE)	7		
	8 Wheels(X=driven)	Number			2 × / 2	2 × / 2	2 × / 2	8		
DIMENSIONS	9 Maximum fork height	h3 Standard lift height	mm	3000	3000	3000	9			
	10 Free lift	h2 Standard free lift	mm	160	160	160	10			
	13 Fork size	s.e.l	mm	40 × 122 × 1070	40 × 122 × 1070	40 × 122 × 1070	13			
		Max. Fork Spread	mm	1000	1000	1000				
		Min. Fork Spread	mm	250	250	250				
	14 Tilt range	α / β Mast forward/backward		deg	5 / 10	5 / 10	5 / 10	14		
	15	L2 Length to fork face	mm	2325	2325	2445	15			
	16	B Overall width	mm	1165	1165	1165	16			
	Overall measurement	17 h1 Height mast retracted	mm	1985	1985	1985	17			
		18 h4 Height mast extended	mm	4045	4045	4045	18			
		19 h6 Height overhead guard	mm	2120	2120	2275	19			
		20 h7 Height of driver's seat	mm	1055	1055	1165	20			
		21 Turning radius (outside)	Wa	mm	2000	2000	2140	21		
		22 Load distance	X From center of front axle	mm	425	425	425	22		
		23 Right angle stacking aisle	Ast pallets (L × W) 1200 × 800 / 1000 × 1200		mm	3825 / 3625	3825 / 3625	3965 / 3765	23	
	PERFORMANCE	24	Travelling	full load	km/h	15	15	15	24	
				no load	km/h	17.5	17.5	17		
		25	Speeds	Lifting	full load	mm/s	345	345	345	25
					no load	mm/s	605	605	605	
				Lowering	full load	mm/s	500	500	500	
					no load	mm/s	500	500	500	
	28 Max. drawbar pull	full/no load	N	14595 / 14595	14595 / 14595	14595 / 14595	28			
	29 Gradeability at 2km/h	full/no load	%	20 / 35	19 / 33	19 / 33	29			
30 Max. gradeability	full/no load	%	—	—	—	30				
WEIGHTS	32 Truck weight	no load	kg	3875	4085	4065	32			
	33	Weight distribution	full load	front/rear	kg	5650 / 725	5725 / 860	5745 / 820	33	
			no load	front/rear	kg	1535 / 2340	1610 / 2475	1775 / 2290		
	34		Number.	front/rear	each	2 / 2	2 / 2	2 / 2	34	
CHASSIS & WHEELS	35	Tires	Size-front		23 × 9-10-16PR	23 × 9-10-16PR	23 × 9-10-16PR	35		
	36		Size-rear		18 × 7-8-14	18 × 7-8-14	18 × 7-8-14	36		
	37				18 × 7-8-14	18 × 7-8-14	18 × 7-8-14	37		
	38	Wheelbase	y	mm	1450	1450	1595	38		
	39	Tread	sprw 1/sprw 2	front/rear	mm	940 / 930	940 / 935	940 / 930	39	
		Backrest height	Hb top of backrest - upper of fork face	mm	910	910	910			
		Overhead guard clearance	Hh	mm	1040	1040	1085			
	Counter weight height	Hc	mm	970	970	1080				
DRIVE LINE	40	Ground clearance	m1 Full load minimum mast	mm	105	105	105	40		
	m2 Full load center of wheelbase		mm	110	110	110				
	41							41		
	42	Service brake	Mechanical/hydraulic/electric/pneu			Hyd / Elec	Hyd / Elec	Hyd / Elec	42	
	43	Parking brake	Foot/hand/seat switch			Foot	Foot	Foot	43	
	45	Battery	Voltage/Capacity (5 hour)	min	V/AH	48 / 565	48 / 700	48/865	45	
				max	V/AH	—	—	—		
			weight(STD capacity type)	min-max	kg	885	1095	1370	46	
				drive		KW	12	12	12	47
	48	Electric motors	Load handling		KW	13.5	13.5	13.5	48	
Power steering				KW	—	—	—			
drive					MOS-INV	MOS-INV	MOS-INV			
54	Control type	Load handling			MOS-INV	MOS-INV	MOS-INV	54		
		Power steering			—	—	—			
57	Operating pressure	for attachment	MPa	12.7	12.7	12.7	57			

INTRODUCTION OF AVAILABLE EQUIPMENT



3+1 Performance Modes

Three preset performance modes can be chosen to adjust traveling and lifting performance to suit different requirements.

- (P) Power mode:** For normal use.
- (E) Economy mode:** For extended operating hours.
- (H) High-power mode:** For maximum performance.
- (M) Manual mode:** For customized parameters.

Multifunctional LCD Monitor

The large, easy-to-see LCD panel allows various aspects of vehicle status such as speed, battery charge and performance settings as well as several indicators and warning lights to be checked at a glance. To enhance security, there is also a password entry feature that enables up to 5 codes to be preset depending on work conditions.

And to complement the central management of vehicle data, the self-diagnosis system helps to reduce downtime for fast maintenance in the event of a malfunction.



Super Wide-view Mast

The outer chains and extra-wide opening between the inner masts give the operator superior forward visibility, helping to improve the efficiency of operations.

Single Control Lever (option)

Our original Single Control Lever enables simultaneous lifting and tilting operations for greater productivity (gun-grip double control levers are also available).



Tilt Leveling System (option*)

A simple press of a button on the mast control lever brings the forks automatically to the horizontal position.

*Available only for the 2W300 mast.

Smooth-run System (option)

Two different types of accumulator absorb the shocks transmitted from the road surface, making both load handling and travel smoother. This offers extra benefits when working with delicate loads on rough surfaces.



*The photo shown above is a cushion tire model.

Option Availability

Item		1B2-U	
Battery	Less battery	●	
	Battery (Wet type)	○	
	Battery case	○	
	Battery connector	EC type Standard type	●
Battery charger	OFF-truck type	○	
Instruments	Multifunctional LCD Monitor	Battery capacity meter	○
		Hour meter	○
		Digital clock	○
		Warning display	●
		Speedometer	○
Warning buzzer	Back-up buzzer	○	
	Parking brake warning buzzer	●	
Light	Head lights (without guard)	●	
	Turn signal lamps	○	
	Rear combination lamps	○	
	Rear working light	○	
	Rotating light (yellow)	○	
Tires	Rib-lug tires	●	
	J-lug tires (Textile)	○	
	Solid tires	○	
	Double tires	○	
Body	Canvas cabin	○	
	Windshield	○	
	Floor mat	●	
	Rain guard	○	
	Rearview mirrors (both sides)	○	
Seat	Restraint Seat with Suspension	●	
	Without seat	○	
Mast	2W mast	●	
	2F mast	○	
	3F mast	○	
	Without mast	○	
	Tilt cylinder boot & cover	○	
	Tilt Leveling System (2W300 mast only)	○	
	Carriage & Backrest	Wide carriage	○
High backrest	○		
Wide and high backrest	○		
Without backrest	○		
Fork	Long forks	○	
	Extension forks	○	
	Without forks	○	
F/R lever	F/R lever on left	●	
	F/R lever on right	○	
Steering system	Small-diameter steering wheel with tilt adjustment	●	
	Steering Synchronizer	○	
Hydraulic control system	2 spool valve	●	
	3 spool valve	○	
	4 spool valve	○	
	Single control lever	○	
	Double control lever	●	
	3 spool piping to carriage	○	
	4 spool piping to carriage	○	
Smooth-run System	○		
Tool	Tool kit	○	
	Tool kit with jack	○	
Label	English	●	
	German	○	
	French	○	
	Spanish	○	
Attachment	Side shift (3 spool)	○	
	Fork positioner	○	