

**NISSAN**  
FORKLIFT

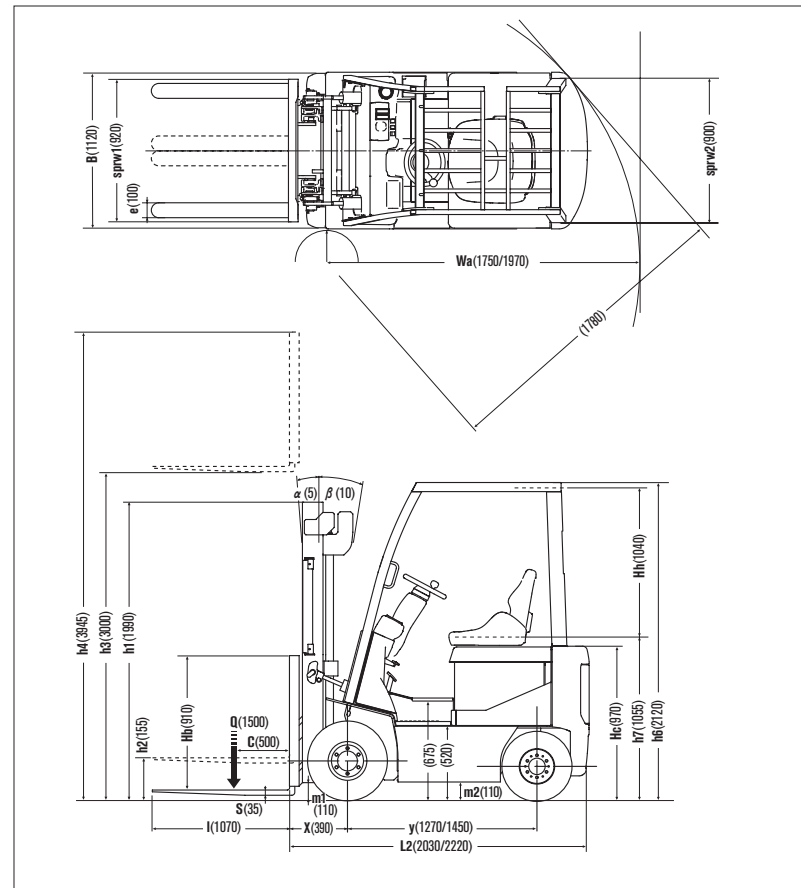
# **BX Series**

Pneumatic Tire/Electric Powered Models

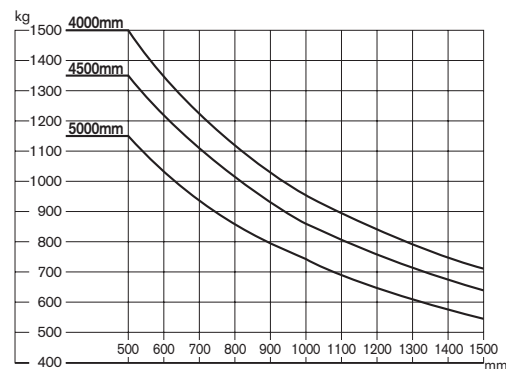
**1.5 ton ▶ 1.8 ton**  
at 500mm Load Center



## Dimensions



## Load Capacity Chart



No capacity reduction until 4000 mm height. Load capacities are computed with following conditions, a) Standard 2W Mast and b) Mast in vertical position.

## Tire and Tread Specifications

Front Tire	single	double
Front Tire Size	21 × 8-9-10PR	6.00-9-10PR
Overall Width mm	1120	1430
Front Tread mm	920	1070

## Ground Clearance

Under mast mm	110	110
Under frame mm	110	110

## Mast Specifications & Rated Capacities

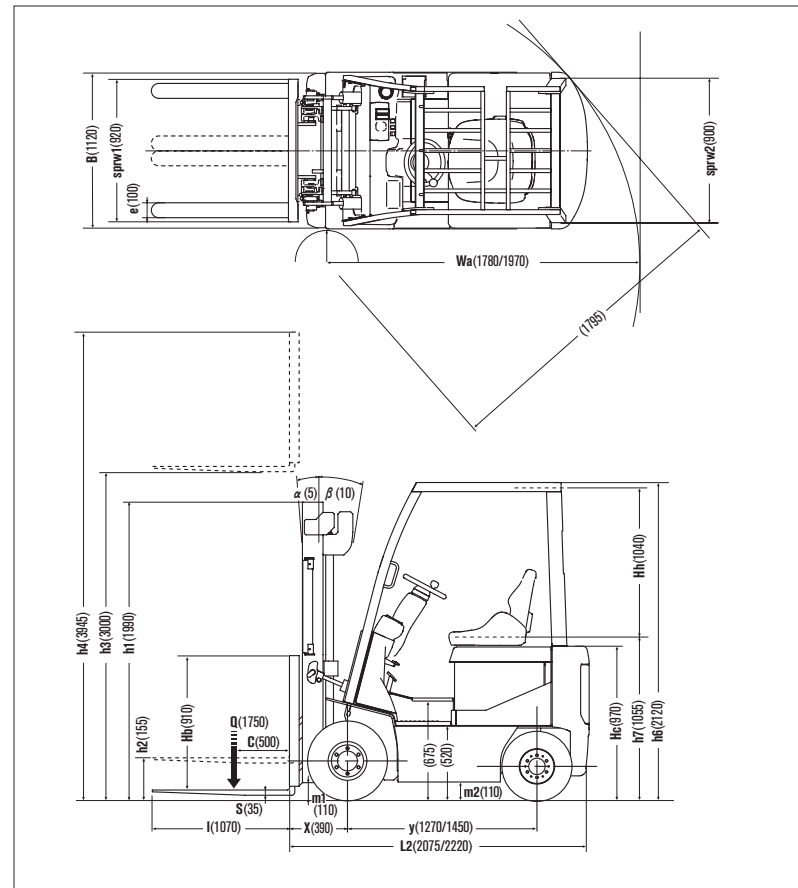
K1B1L15U, K1B1R15U, KG1B1L15U

Mast type	Mast name	Max. fork Height mm	Overall height			Free lift		Front overhang mm	Tilt angle Forward/Backward deg	Capacity Single tire Load center 500mm Kg
			Fully lowered mm	Fully extended		Without backrest mm	With STD backrest mm			
				Without backrest mm	With STD backrest mm					
Two stage (Wide view 2W)	2W270	2700	1840	3225	3645	155	155	390	5/10	1500
	2W300	3000	1990	3525	3945					1500
	2W330	3300	2140	3825	4245					1500
	2W350	3500	2275	4025	4445					1500
	2W370	3700	2400	4225	4645					1500
	2W400	4000	2590	4525	4945					1500
	2W450	4500	2840	5025	5445					1350
	2W500	5000	3090	5525	5945					1150
Two stage (Full free 2F)	2F270	2700	1840	3225	3645	1350	930	390	5/10	1500
	2F300	3000	1990	3525	3945	1500	1080			1500
	2F330	3300	2140	3825	4245	1650	1230			1500
	2F350	3500	2275	4025	4445	1785	1365			1500
	2F370	3700	2400	4225	4645	1910	1490			1500
	2F400	4000	2590	4525	4945	2100	1680			1500
	2F450	4500	2840	5025	5445	2100	1680			1500
Three stage (Full free 3F)	3F385	3850	1840	4380	4795	1345	930	395	5/5	1500
	3F430	4300	1990	4830	5245	1495	1080			1400
	3F475	4750	2140	5280	5695	1645	1230			1300
	3F515	5150	2275	5685	6100	1780	1365			1050
	3F550	5500	2400	6030	6445	1905	1490			850
	3F600	6000	2590	6530	6945	2095	1680			650

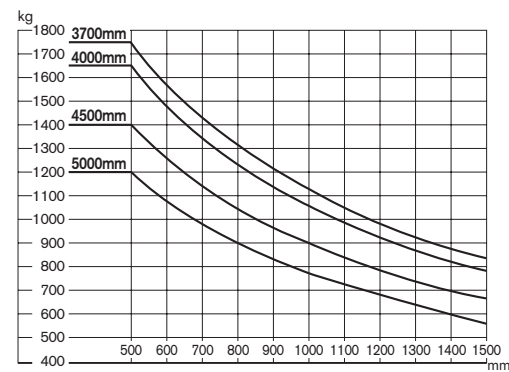
## Main Truck Specifications

Item		K1B1L15U	K1B1R15U	KG1B1L15U
1	Manufacturer	NISSAN	NISSAN	NISSAN
2	Model	K1B1L15U	K1B1R15U	KG1B1L15U
3	Load capacity	Q Load lifted kg	1500	1500
4	Load center	C Distance mm	500	500
5	Power unit	Battery, diesel, Gasoline, LP gas	BAT	BAT
6	Operator type	Walkie, rider/stand, rider/seat	Rider / seat	Rider / seat
7	Tire type	front/rear	P(SE) / P(SE)	P(SE) / P(SE)
8	Wheels(X=driven)	Number front/rear	2 × / 2	2 × / 2
9	Maximum fork height	h3 Standard lift height mm	3000	3000
10	Free lift	h2 Standard free lift mm	155	155
13	Fork size	s.e.l mm	35 × 100 × 1070	35 × 100 × 1070
	Max. Fork Spread	mm	900	900
	Min. Fork Spread	mm	205	205
14	Tilt range	α / β Mast forward/backward deg	5 / 10	5 / 10
15	L2 Length to fork face	mm	2030	2220
16	B Overall width	mm	1120	1120
17	Overall measurement	h1 Height mast retracted mm	1990	1990
18	h4 Height mast extended mm	3945	3945	
19	h6 Height overhead guard mm	2120	2120	
20	h7 Height of driver's seat mm	1055	1055	
21	Turning radius (outside)	Wa mm	1750	1970
22	Load distance	X From center of front axle mm	390	390
23	Right angle stacking aisle	Ast pallets (L × W) 1200 × 800 / 1000 × 1200 mm	3540 / 3340	3540 / 3340
24	Travelling	full load km/h	16	16
		no load km/h	18	17.5
25	Lifting	full load mm/s	435	435
		no load mm/s	640	640
26	Lowering	full load mm/s	500	500
		no load mm/s	500	500
28	Max. drawbar pull	full/no load N	10770 / 10770	10770 / 10770
29	Gradeability at 2km/h	full/no load %	22 / 34	21 / 32
30	Max. gradeability	full/no load %	—	—
32	Truck weight	no load kg	2980	3060
33	Weight distribution	full load front/rear kg	3850 / 630	3885 / 675
34		no load front/rear kg	1280 / 1700	1320 / 1740
35	Number.	front/rear each	2 / 2	2 / 2
36	Tires	Size-front	21 × 8-9-10PR	21 × 8-9-10PR
37	Size-rear		5.00-8-10PR	5.00-8-10PR
38	Wheelbase	y mm	1270	1450
39	Tread	sprw 1/sprw 2 front/rear mm	920 / 900	920 / 900
	Backrest height	Hb top of backrest - upper of fork face mm	910	910
	Overhead guard clearance	Hh mm	1040	1040
	Counter weight height	Hc mm	970	970
40	Ground clearance	m1 Full load minimum mast mm	110	110
41		m2 Full load center of wheelbase mm	110	110
42	Service brake	Mechanical/hydraulic/electric/pneu	Hyd / Elec	Hyd / Elec
43	Parking brake	Foot/hand/seat switch	Foot	Foot
45	Battery	Voltage/Capacity (5 hour) min max V/AH	48 / 485	48 / 545
46		weight(STD capacity type) min-max kg	765	845
47	drive	KW	9	9
48	Electric motors	Load handling KW	11	11
	Power steering	KW	—	—
54	drive		MOD-INV	MOD-INV
	Control type	Load handling	MOD-INV	MOD-INV
	Power steering		—	—
57	Operating pressure	for attachment MPa	12.7	12.7

## Dimensions



## Load Capacity Chart



No capacity reduction until 3700 mm height. Load capacities are computed with following conditions, a) Standard 2W Mast and b) Mast in vertical position.

## Tire and Tread Specifications

Front Tire	single	double
Front Tire Size	21 × 8-9-10PR	6.00-9-10PR
Overall Width mm	1120	1430
Front Tread mm	920	1070

## Ground Clearance

Under mast mm	110	110
Under frame mm	110	110

## Mast Specifications & Rated Capacities

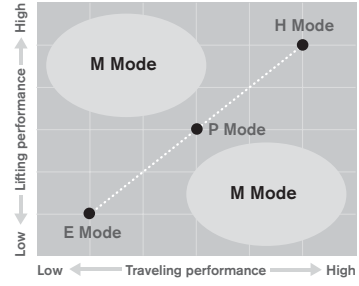
K1B1L18U/FU, K1B1R18U, KG1B1L18U

Mast type	Mast name	Max. fork Height mm	Overall height			Free lift		Front overhang mm	Tilt angle deg	Capacity Single tire Load center 500mm Kg
			Fully lowered mm	Without backrest mm	With STD backrest mm	Without backrest mm	With STD backrest mm			
Two stage (Wide view 2W)	2W270	2700	1840	3330	3645	155	155	390	5/10	1750
	2W300	3000	1990	3630	3945					1750
	2W330	3300	2140	3930	4245					1750
	2W350	3500	2275	4130	4445					1750
	2W370	3700	2400	4330	4645					1750
	2W400	4000	2590	4630	4945					1650
	2W450	4500	2840	5130	5445					1400
	2W500	5000	3090	5630	5945					1200
Two stage (Full free 2F)	2F270	2700	1840	3330	3645	1245	930	390	5/10	1750
	2F300	3000	1990	3630	3945	1395	1080			1750
	2F330	3300	2140	3930	4245	1545	1230			1750
	2F350	3500	2275	4130	4445	1680	1365			1750
	2F370	3700	2400	4330	4645	1805	1490			1750
	2F400	4000	2590	4630	4945	1995	1680			1650
	2F450	4500	2840	5130	5445	1995	1680			1400
Three stage (Full free 3F)	3F385	3850	1840	4480	4795	1245	930	395	5/5	1650
	3F430	4300	1990	4930	5245	1395	1080			1550
	3F475	4750	2140	5380	5695	1545	1230			1350
	3F515	5150	2275	5785	6100	1680	1365			1100
	3F550	5500	2400	6130	6445	1805	1490			850
	3F600	6000	2590	6630	6945	1995	1680			650

## Main Truck Specifications

Item		K1B1L18U/FU	K1B1R18U	KG1B1L18U					
SPECIFICATIONS	1 Manufacturer	NISSAN			1				
	2 Model	K1B1L18U / FU	K1B1R18U	KG1B1L18U	2				
	3 Load capacity	Q Load lifted	kg	1750	1750	1750	3		
	4 Load center	C Distance	mm	500	500	500	4		
	5 Power unit	Battery, diesel, Gasoline, LP gas			BAT	BAT	BAT	5	
	6 Operator type	Walkie, rider/stand, rider/seat			Rider / seat	Rider / seat	Rider / seat	6	
	7 Tire type	front/rear			P(SE) / P(SE)	P(SE) / P(SE)	P(SE) / P(SE)	7	
	8 Wheels(X=driven)	Number			2 × / 2	2 × / 2	2 × / 2	8	
DIMENSIONS	9 Maximum fork height	h3 Standard lift height	mm	3000	3000	3000	9		
	10 Free lift	h2 Standard free lift	mm	155	155	155	10		
	13 Fork size	s.e.l	mm	35 × 100 × 1070	35 × 100 × 1070	35 × 100 × 1070	13		
		Max. Fork Spread	mm	900	900	900			
		Min. Fork Spread	mm	205	205	205			
	14 Tilt range	α / β Mast forward/backward	deg	5 / 10	5 / 10	5 / 10	14		
	15	L2 Length to fork face	mm	2075	2075	2220	15		
	16	B Overall width	mm	1120	1120	1120	16		
	Overall measurement	17 h1 Height mast retracted	mm	1990	1990	1990	17		
		18 h4 Height mast extended	mm	3945	3945	3945	18		
		19 h6 Height overhead guard	mm	2120	2120	2120	19		
		20 h7 Height of driver's seat	mm	1055	1055	1055	20		
	21 Turning radius (outside)	Wa	mm	1780	1780	1970	21		
	22 Load distance	X From center of front axle	mm	390	390	390	22		
	23 Right angle stacking aisle	Ast pallets (L×W) 1200 × 800/1000 × 1200	mm	3570 / 3370	3570 / 3370	3760 / 3560	23		
	PERFORMANCE	24	Travelling	full load	km/h	16	16	16	24
				no load	km/h	18	17.5	17.5	
		25	Lifting	full load	mm/s	390	390	390	25
				no load	mm/s	640	640	640	
		26	Lowering	full load	mm/s	500	←	500	26
				no load	mm/s	500	←	500	
	28 Max. drawbar pull	full/no load	N	10770 / 10770	10770 / 10770	10770 / 10770	28		
	29 Gradeability at 2km/h	full/no load	%	19 / 32	19 / 30	19 / 30	29		
30 Max. gradeability	full/no load	%	—	—	—	30			
WEIGHTS	32 Truck weight	no load	kg	3170	3245	3205	32		
	33	Weight distribution	full load	front/rear	kg	4240 / 680	4270 / 725	4260 / 695	33
			no load	front/rear	kg	1245 / 1925	1275 / 1970	1420 / 1785	34
	35	Number.	front/rear	each	2 / 2	2 / 2	2 / 2	35	
36	Tires	Size-front	←	21 × 8-9-10PR	←	21 × 8-9-10PR	36		
		Size-rear		5.00-8-10PR	5.00-8-10PR	5.00-8-10PR	37		
38 Wheelbase	y	mm	1270	1270	1450	38			
39 Tread	sprw 1/sprw 2	front/rear	mm	920 / 900	920 / 900	920 / 900	39		
	Backrest height	Hb top of backrest - upper of fork face	mm	910	910	910			
	Overhead guard clearance	Hh	mm	1040	1040	1040			
	Counter weight height	Hc	mm	970	970	970			
40	Ground clearance	m1 Full load minimum mast	mm	110	110	110	40		
41		m2 Full load center of wheelbase	mm	110	110	110	41		
42	Service brake	Mechanical/hydraulic/electric/pneu			Hyd / Elec	Hyd / Elec	Hyd / Elec	42	
43	Parking brake	Foot/hand/seat switch			Foot	Foot	Foot	43	
DRIVE LINE	45	Battery	Voltage/Capacity (5 hour)	min	V/AH	48 / 485	48 / 545	48 / 600	45
			max	V/AH	—	—	48 / 700		
	46	weight(STD capacity type)	min-max	kg	765	845	940-1095	46	
			drive	KW	9	9	9	47	
48	Electric motors	Load handling	KW	11	11	11	48		
		Power steering	KW	—	—	—			
54	drive	MOD-INV			MOD-INV	MOD-INV	MOD-INV	54	
55	Control type	Load handling	MOD-INV			MOD-INV	MOD-INV		
		Power steering	—			—	—		
57	Operating pressure	for attachment	MPa	12.7	12.7	12.7	57		

# INTRODUCTION OF AVAILABLE EQUIPMENT



## 3+1 Performance Modes

Three preset performance modes can be chosen to adjust traveling and lifting performance to suit different requirements.

- (P) Power mode:** For normal use.
- (E) Economy mode:** For extended operating hours.
- (H) High-power mode:** For maximum performance.
- (M) Manual mode:** For customized parameters.

## Multifunctional LCD Monitor

The large, easy-to-see LCD panel allows various aspects of vehicle status such as speed, battery charge and performance settings as well as several indicators and warning lights to be checked at a glance. To enhance security, there is also a password entry feature that enables up to 5 codes to be preset depending on work conditions.

And to complement the central management of vehicle data, the self-diagnosis system helps to reduce downtime for fast maintenance in the event of a malfunction.



## Super Wide-view Mast

The outer chains and extra-wide opening between the inner masts give the operator superior forward visibility, helping to improve the efficiency of operations.

## Single Control Lever (option)

Our original Single Control Lever enables simultaneous lifting and tilting operations for greater productivity (gun-grip double control levers are also available).



## Tilt Leveling System (option\*)

A simple press of a button on the mast control lever brings the forks automatically to the horizontal position.

\*Available only for the 2W300 mast.

## Smooth-run System (option)

Two different types of accumulator absorb the shocks transmitted from the road surface, making both load handling and travel smoother. This offers extra benefits when working with delicate loads on rough surfaces.



\*The photo shown above is a cushion tire model.

## Option Availability

Item		1B1-U	
Battery	Less battery	●	
	Battery (Wet type)	○	
	Battery case	○	
	Battery connector	EC type Standard type	○ ●
Battery charger	OFF-truck type	○	
Instruments	Multifunctional LCD Monitor	Battery capacity meter	○
		Hour meter	○
		Digital clock	○
		Warning display	●
		Speedometer	○
Warning buzzer	Back-up buzzer	○	
	Parking brake warning buzzer	●	
Light	Head lights (without guard)	●	
	Turn signal lamps	○	
	Rear combination lamps	○	
	Rear working light	○	
	Rotating light (yellow)	○	
Tires	Rib-lug tires	●	
	J-lug tires (Textile)	—	
	Solid tires	○	
	Double tires	○	
Body	Canvas cabin	○	
	Windshield	○	
	Floor mat	●	
	Rain guard	○	
	Rearview mirrors (both sides)	○	
Seat	Restraint Seat with Suspension	●	
	Without seat	○	
Mast	2W mast	●	
	2F mast	○	
	3F mast	○	
	Without mast	○	
	Tilt cylinder boot & cover	○	
	Tilt Leveling System (2W300 mast only)	○	
	Carriage & Backrest	Wide carriage	○
High backrest	○		
Wide and high backrest	○		
Without backrest	○		
Fork	Long forks	○	
	Extension forks	○	
	Without forks	○	
F/R lever	F/R lever on left	●	
	F/R lever on right	○	
Steering system	Small-diameter steering wheel with tilt adjustment	●	
	Steering Synchronizer	○	
Hydraulic control system	2 spool valve	●	
	3 spool valve	○	
	4 spool valve	○	
	Single control lever	○	
	Double control lever	●	
	3 spool piping to carriage	○	
	4 spool piping to carriage	○	
Smooth-run System	○		
Tool	Tool kit	○	
	Tool kit with jack	○	
Label	English	●	
	German	○	
	French	○	
	Spanish	○	
Attachment	Side shift (3 spool)	○	
	Fork positioner	○	